



Clone^x

CLONEX (M) SDN. BHD.



B-20-03, Casa Green Condo, Bukit Jalil,
58200, Kuala Lumpur. MY



www.clonex.com.my



+60 11-2149 4041



info@clonex.com.my

Partnerships:

ternium
Engineering Services & Solutions

Apsyn **SEEDS**

Time Is Everything When You Are Running Your Projects

Delays in receiving items/reagents/chemical & consumables are the first problem any research undergoes.

But is there a way to receive item in mere days, even for foreign branded items ?



NEXT-DAY ORDER

NDO Express Delivery Scheme

Get your reagents & consumable in mere days time of delivery

Our NDO Scheme for Industries & Institutions

We can delivery your items be it proteins, chemical, reagents, consumables and many more with our customized delivery scheme

Let's get in touch ...



CloneX



B-20-03, Casa Green Condo, Bukit Jalil,
58200, Kuala Lumpur. MY



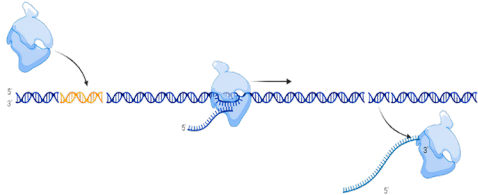
+60 11-2149 4041 (WA only)



info@clonex.com.my

PROPERTY OF CLONEX (M) SDN. BHD.

We provide lab research and equipment analysis service for researchers

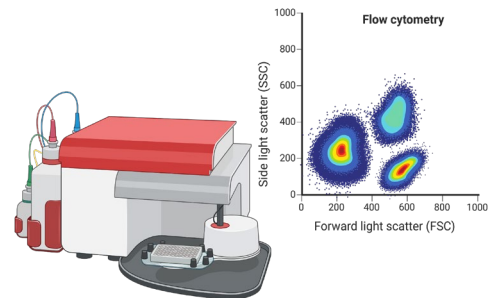


We offer **in-vitro RNA synthesis service** for researchers facing difficulties in transcribing large quantities of custom RNA sequences

For price and duration enquiry, contact our customer support team.

We offer **flow cytometry service** for cell surface marker analysis. We charge **only RM 65 /sample** (markers & dyes sold separately).

For price and duration enquiry, contact our customer support team.



Reverse Electrochemical Sensing of FLT3-ITD Mutations in Acute Myeloid Leukemia Using Gold Sputtered ZnO-Nanorod Configured DNA Biosensors

by Ramesh Thevendran¹, Kai Loong Foo², Mohd Hazwan Hussin³, Emmanuel Jairoj Moses⁴, Marimuthu Citartan¹, Haarithprasad Rajintra Prasad⁵, and Solayappan Maheswaran^{4,6,7}

¹ Infectomics Cluster, Advanced Medical & Dental Institute, Universiti Sains Malaysia, Bertam, Kepala Batas 13200, Malaysia
² Nano Biochip Research Group, Institute of Nano Electronic Engineering, Universiti Malaysia Perlis, Kangar 01000, Malaysia

Real-Time

Low-Cost Nanobiosensors for Detection of virulent DNA signature of HPV-16 in Cervical Carcinoma

Ramesh Thevendran, Kai Loong Foo, Haarithprasad R., Annie Jeyachristy Sam & Maheswaran Solayappan

Scientific Reports 9 Article number: 17039 (2019) | [Cite this article](#)

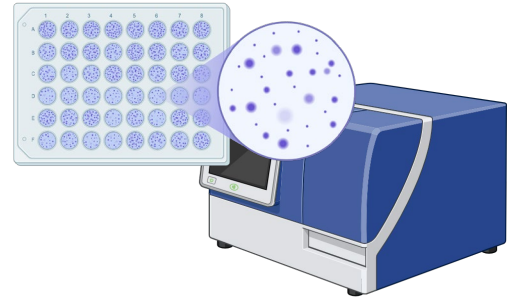
We offer **journal imaging drawing** and creation service of Q1 publication quality.

For price and duration enquiry, contact our customer support team.

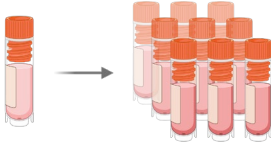
We provide lab research and equipment analysis service for researchers

We offer **ELISA Plate Testing** services for labs and medical sites for cell protein quantification and detections. We charge **RM 101 /sample or plate-well reaction only** (plates and reagents sold separately).

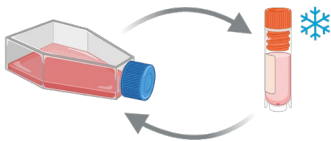
For price and duration enquiry, contact our customer support team.



Cell culture & passaging



Cryo-storage & defrosting

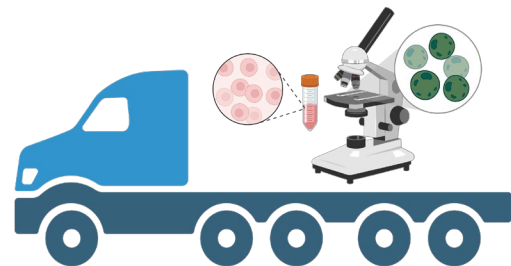


We offer **cell passaging and cryo-storage** services. All cell culture activities are conducted under sterile lab conditions ensuring **zero-contamination risks**.

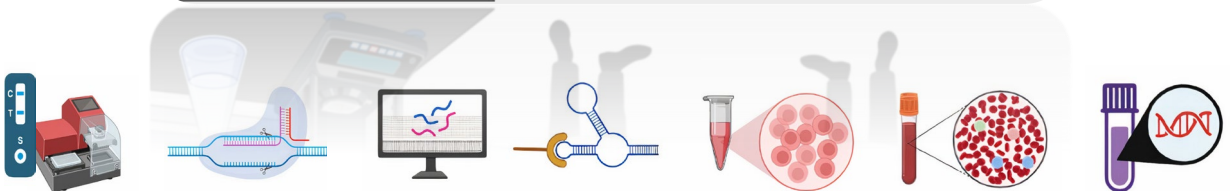
For price and duration enquiry, contact our customer support team.

We provide **express delivery service** for specific ATCC human cell lines such as (but not limited to) K562, Kasumi-1, THP-1, clinical allogenic NK cells, cord blood-derived PBMC, UC-derived stem cell, human bone marrow stem cells.

For price and duration enquiry, contact our customer support team. Items can be arranged via **NDO schemes** as well.



We assist researchers with lab-technical consults and experimental procedure training



Technical consultations and training are provided by our expert science teams with strong background on the required research analysis, procedures and experiments.

Our **science expertise** range from molecular biology works, cell biology & culture works, diagnostics platforms (e.g. Western Blot, ELISA, IDE-biosensors) and bio-computational analysis of biomolecules.

For more information and arrangement of training/consultation session, please contact our customer support team.



The new age of science demands the power of *in-silico* biotechnologies

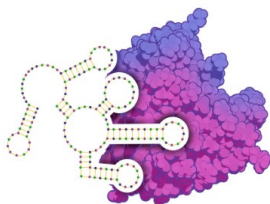
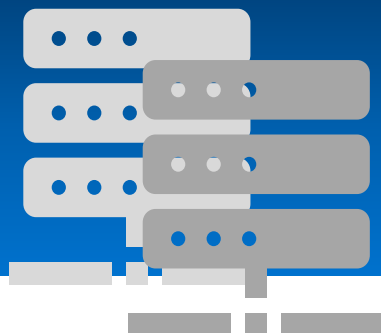
In-silico lab techniques and analysis aid in wet lab validations and pre-lab analysis for many researchers worldwide.

But such processes are not easy to achieve as it requires HP-computers with software knowledges.

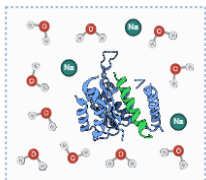
WEBSERVER SERVICE

Molecular Docking & Dynamic Simulations

We can help conduct *in-silico* services and validation for your research needs



Technical & expertise help in **Molecular Docking** of DNA, RNA and protein, including structural modeling



Technical & expertise help in **Molecular Dynamic Simulations** of DNA, RNA and protein using GPU-powered Gromacs softwares that finish simulation in matter of days – mins of otherwise months server time



B-20-03, Casa Green Condo, Bukit Jalil,
58200, Kuala Lumpur. MY



+60 11-2149 4041 (WA only)



info@clonex.com.my

PROPERTY OF CLONEX (M) SDN. BHD.

We provide engineering, solutions and machinery service or industries and laboratories

Terrium



BENCHTOP CENTRIFUGES



3D-PRINTERS



ELECTRONIC BALANCES



MEDICAL FRIDGES



WATER BATH



CO₂ INCUBATORS



Cost-effective lab equipments & machineries



Service & Calibrations



Machine Training and Personnel Developments

Terrium

ENGINEERING SERVICES & SOLUTIONS

Held By CLONEX(M) SDN BHD



B-20-03, Casa Green Condo, Bukit Jalil,
58200, Kuala Lumpur. MY



Kawasan Perusahaan Sungai Tukang,
08000 Sungai Petani, Kedah, MY.



+60 11-2149 4041



terriumeng@yahoo.com

Partnerships :

